

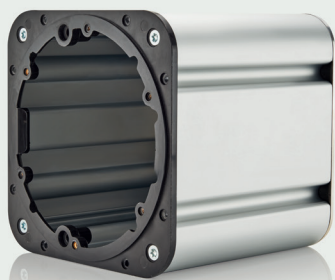


Excellence. Evolved.

This is not just another speaker range. Each new generation of 800 Series Diamond is a landmark event for Bowers & Wilkins. This is our benchmark, our icon; the most advanced range of loudspeakers we know how to make. For us, the 800 Series Diamond is everything we know, and everything we are.

HTM81 D4

Our largest centre-channel speaker is designed to be the perfect partner for the 801 D4 or 802 D4. Small wonder, then, that it's such a powerful performer, with sound that perfectly matches the quality of its illustrious stablemates.



Midrange enclosure

Inside HTM81 D4, we use a stiff, aluminium enclosure designed to maximise the performance of the midrange drive unit. It provides a controlled location point for the midrange decoupling and prevents unwanted air leakage into the surrounding cabinet.

Aerofoil bass cone

Our Aerofoil bass cone technology remains an outstanding solution to the conundrum of combining low mass and high stiffness, thanks to its carbon-fibre skin and variable-profile foam core. Now, we have added the foam Anti-Resonance Plug™ for lower distortion and even cleaner bass.



HTM81 D4



Technical features

Diamond tweeter
Solid body Tweeter-on-Top
Continuum cone FST™
Anti-Resonance plug
Biomimetic Suspension
Matrix™
Aerofoil cone bass units
Flowport™

Description

3-way vented-box system

Drive units

1x ø25mm (1in) diamond dome high-frequency
1x ø150mm (6in) Continuum cone FST midrange
2x ø200mm (8in) Aerofoil cone bass units

Frequency range

20Hz to 35kHz

Frequency response

(+/-3dB from reference axis)

28Hz to 28kHz

Sensitivity

(on axis at 2.83Vrms at 1m)

90dB

Harmonic distortion

2nd and 3rd harmonics (90dB, 1m on axis)
<1 % 80Hz – 20kHz
<0.3% 100Hz – 20kHz

Nominal impedance

8Ω (minimum 3.0Ω)

Recommended amplifier power

50W – 500W into 8Ω on unclipped programme

Max. recommended cable impedance

0.1Ω

Dimensions

Height: 334mm
Width: 847mm
Depth: 371mm

Net weight

32.20kg

Finishes

Cabinet:
Gloss Black
White

Grille:
Black
Grey